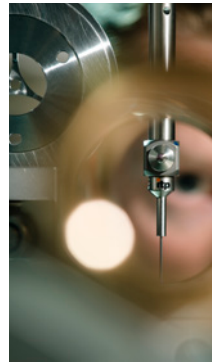
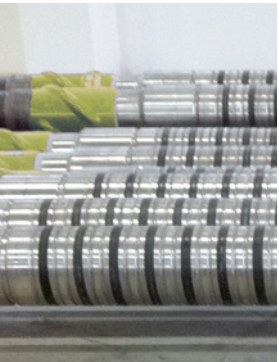


INDUSTRIAL PH.D. POSITION WIRELESS COMMUNICATION



A WORLD CLASS COMPANY

Welltec® is an international oilfield service company and one of the leading providers of intervention solutions for oil and gas wells. We develop and manufacture precision-controlled technologies that have been embraced by the world's major oil and gas producers and won a series of industry awards for innovative thinking. Today, our solutions are aimed at providing optimal reservoir exploitation.

THE DEPARTMENT

We are actively recruiting for an Electrical Engineer in our Well Completions department to a three-year industrial Ph.D. position. Well Completions is responsible for developing Welltec's vision of a full bore capability completion to maximize production capabilities while maintaining future work over flexibility. The department is very international oriented with a variety of different nationalities represented and an informal work environment.

THE POSITION

The position is offered in the frame of the Ph.D. program at the Technical University of Denmark (DTU), Kongens Lyngby and working hours will be split between Welltec® and DTU. The Ph.D. study will be conducted in the Electromagnetic Systems Group (EMS) at the Department of Electrical Engineering, read more [HERE](#). The field of research is wireless communication in oil and gas well environments with special focus on electromagnetic principles.

You are expected to drive all project phases including:

- Description of potential operation scenarios and the associated environments
- Selection and theoretical investigation of candidate communication principles
- Laboratory and model investigations to determine performance limitations
- Design and development of critical parts of proof-of-concept systems

THE CANDIDATE

The preferred candidate has the following profile:

- Master's degree within Electrical Engineering or Physics
- Experience with development of electronics
- Good knowledge of electromagnetics and preferably experience with EM modeling
- Ability to deliver results in an industrial environment along with academic achievements
- Professional working proficiency in English (written and oral)
- Eligible to enrollment according to the admission, read more [HERE](#)

WE OFFER

Working with Welltec® means challenges and personal development in a demanding work environment. It is exciting, rewarding and a varied place to work. Welltec® is an equal opportunities employer that also offers a competitive compensation package, including pension, health insurance and group life insurance.

APPLICATION

If you are interested in the position and you have the required qualifications submit your application [HERE](#). Please include cover letter, resume, grade transcripts, B.Sc./M.Sc. Diploma and an Excel spreadsheet with grades (See guideline and Excel spreadsheet [HERE](#)).

The application deadline is Monday 13 October.

For more information about Welltec® please visit www.welltec.com or contact VP Engineering Ricardo Reves Vasques at telephone +45 52 13 83 74 or email rvasques@welltec.com for further information about the position.

Welltec®